

Capable and Affordable

# C295 MPA

PERFORMANCE LEADER



**AIRBUS**  
MILITARY



# C295 MPA

Capable and Affordable





## Contents

Page 03 The New Reference for ASW and Multirole MF

Page 05 FITS Mission System: The Perfect Compleme

Page 06 The Greatest Versatility

Page 07 Multi-Role Capability



# C295 MPA

Military operators require efficient solutions to meet the increasing demands on maritime surveillance: solutions with confirmed capabilities, with flexibility to be adapted to the future needs, and without risks.

The C295 Persuader is a military multirole aircraft with optimum characteristics for Maritime Patrol. It is equipped with a new generation mission system, with proven capability for anti-submarine and anti-surface (ASW/ ASuW) missions in NATO environment.

## Optimum platform for military MPA/ASW missions

- The longest endurance in its category: over 11 hours of surveillance.
- High manoeuvrability and excellent flying qualities at low altitudes.
- Certified for the deployment of SAR life-raft chains, emergency equipment and parachutists.
- Bubble windows that, together with the low speed capability, facilitate visual observation during surveillance and SAR missions.



High manoeuvrability



Certified for the deployment of life-raft chains



Bubble windows

## Certified and in-service proven military features

The C295 offers optional self-protection equipments, which are already in service on hostile environments like Iraq and Afghanistan: Cockpit armour, radar warning (RWR), missile warning (MAWS), laser warning (LWR) and chaff / flares dispensers.

Other military features available are:

- Full compatibility with the use of Night Vision Goggles (NVG)
- Jamming / Electronic Counter Measures (ECM) pod (optional)
- In-flight refuelling system (optional).



## Persuader family: An unequalled experience in Maritime Patrol

With 12 operators from 9 countries, the CN235 & C295 Persuader family is the undisputed leader in the medium size maritime patrol aircraft market.

The C295, a derivative of the CN235, is supported by the CN235 experience as Maritime Patrol aircraft since 1994.

The C295 Persuader with ASW mission sensors is in-flight since 2001.

# The New Reference for ASW and Multirole MPA

## Platform commonality that brings exceptional advantages.

An increasing number of military operators are requesting a common platform capable of being used for different versions, due to the important advantages and savings generated: Commonality on spares and ground support equipment, shared flight crews and maintenance personnel, and common training are some of them.

13 tactical transport operators have acquired up to date the C295 as Tactical Airlifter or platform for different versions: Maritime Surveillance, Pollution Control, Aerial Photography, Anti-Submarine Warfare

The Chilean Navy selected the C295 as common type for the renewal of its surveillance aircraft fleet (P-3 Orion and Embraer P-111).

The Portuguese Air Force's C295 fleet is capable of performing Maritime Surveillance, Marine Pollution Control and Military Transport missions.



Chilean Navy

Portugese A.F. - Transport

Portuguese A.F. - Multi-role MP

## Reliability, supportability and adaptation to military operations

The excellent reliability and the low support requirements result in a high availability and a reduced life cycle cost.

The C295 Maintenance Program, developed according to MSG-3 analysis and certified by the US FAA and EASA, has been adapted and certified for military operations.

As assistance for maintenance management, the C295 is optionally equipped with a Fatigue Life Monitoring System.



## Meeting the most demanding standards

The C295 design and production standards combine the highest safety and robustness required by the civil (US FAA, EASA) and military rules.

Over one (1) million of flight hours in all kind of environments support the effectiveness and maturity of the C295 / CN235 design.

## Under-wing hard points: ordnance and other capabilities

The C295 provides up to 6 under-wing store stations for the installation of torpedoes, anti-surface missiles, depth charges, jamming / reconnaissance pods and search lights.



# C295 MPA

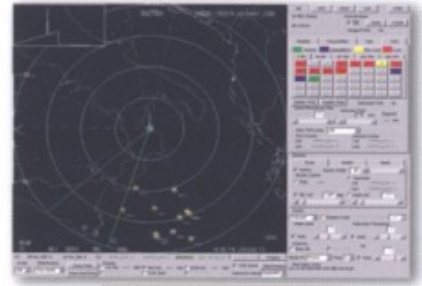
## ASW / ASuW Mission System proven in service

The C295 Persuader includes the Fully Integrated Tactical System (FITS) which is currently in operation in the NATO anti-submarine and anti-surface (ASW/ASuW) missions. It integrates a comprehensive suite of sensors, tactical communications, the weapon system and the aircraft navigation systems.

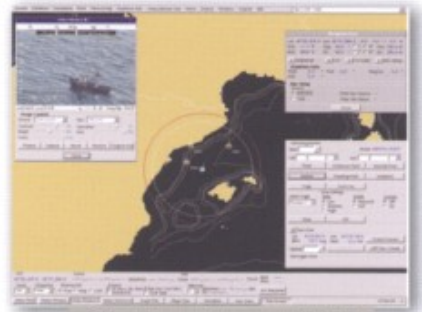
- Maritime surveillance radar. With ISAR, SAR, MTI modes
- IFF Interrogator. Integrated with the surveillance radar
- IR/EO turret. With laser illuminator and Laser Range Finder
- ESM / ELINT. Radar warning capability. Integrated with chaff / flare dispensers
- AIS receptor
- Direction Finder (DF)
- Acoustic Processing System
- Magnetic Anomaly Detector (MAD)
- Automatic Sonobuoy Launcher
- Tactical data-links. Link 11 / 16, national specific systems
- Multi-band data-link. Via HF, V/UHF and SATCOM
- Wide-band data-link (optional)
- COMINT system (optional)
- Store Management System
- Integrated Self-Protection Systems

Thanks to its capabilities and to the complete mission system aboard, the C295 Persuader can perform a wide variety of missions:

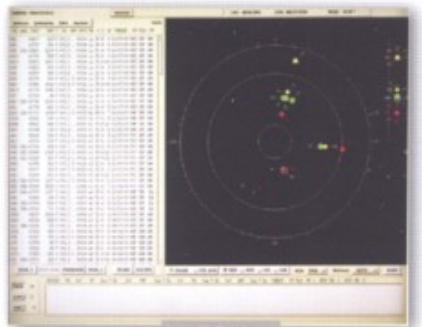
- Anti-Submarine Warfare (ASW)
- Anti-Surface Warfare (ASuW)
- Signals Intelligence (SIGINT)
- Imagery Intelligence (IMINT)
- Control of EEZ, maritime traffic, illegal immigration
- Law enforcement (fight against drug trafficking, terrorism)
- Search and Rescue (SAR)



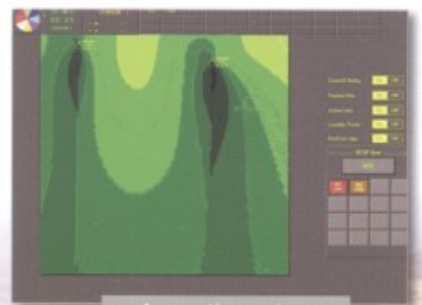
Surveillance radar



Situation picture + IR/EO



ESM



Acoustic system



# FITS Mission System: The Perfect Complement

## Fully Integrated Tactical System (FITS)

The FITS system has extensively been proven in service its maturity and capability to perform efficiently the complex ASW/ASuW missions and other military surveillance missions.

- The Tactical Situation Window displays in real time the tactical situation to operators and pilots, improving the situation awareness.
- Intuitive HMI, optimized in collaboration with operators to reduce the mission operators workload, and to provide redundant access to system functionalities.
- Modular system fully adaptable to customer's requirements, as confirmed by the different versions in flight on board P-3, C295, CN235 and C212 platforms.
- Recognized capability to integrate diverse sensors, not limited to a specific model or manufacturer, thanks to its Open System Architecture (OSA) design.
- Proven in service ASW functionalities: Functionalities to support the deployment of weapons, sonobuoys and markers, as well as stores inventory management.



Digital cartography  
VMAP and CADRG



Cockpit display accessible to both pilots: The cockpit includes an interactive tactile display to present tactical information, navigation data and video from the mission sensors.



Ordnance man panel: Interactive tactile display for the visualization and management of the stores inventory (sonobuoys, weapons)



The portable Mission Planning System (MPS) for deployments, complements the Mission Support Center (MSC) fixed on ground

FITS: Contracted by 11 operators from 8 countries





# C295 MPA

The Greatest Versatility



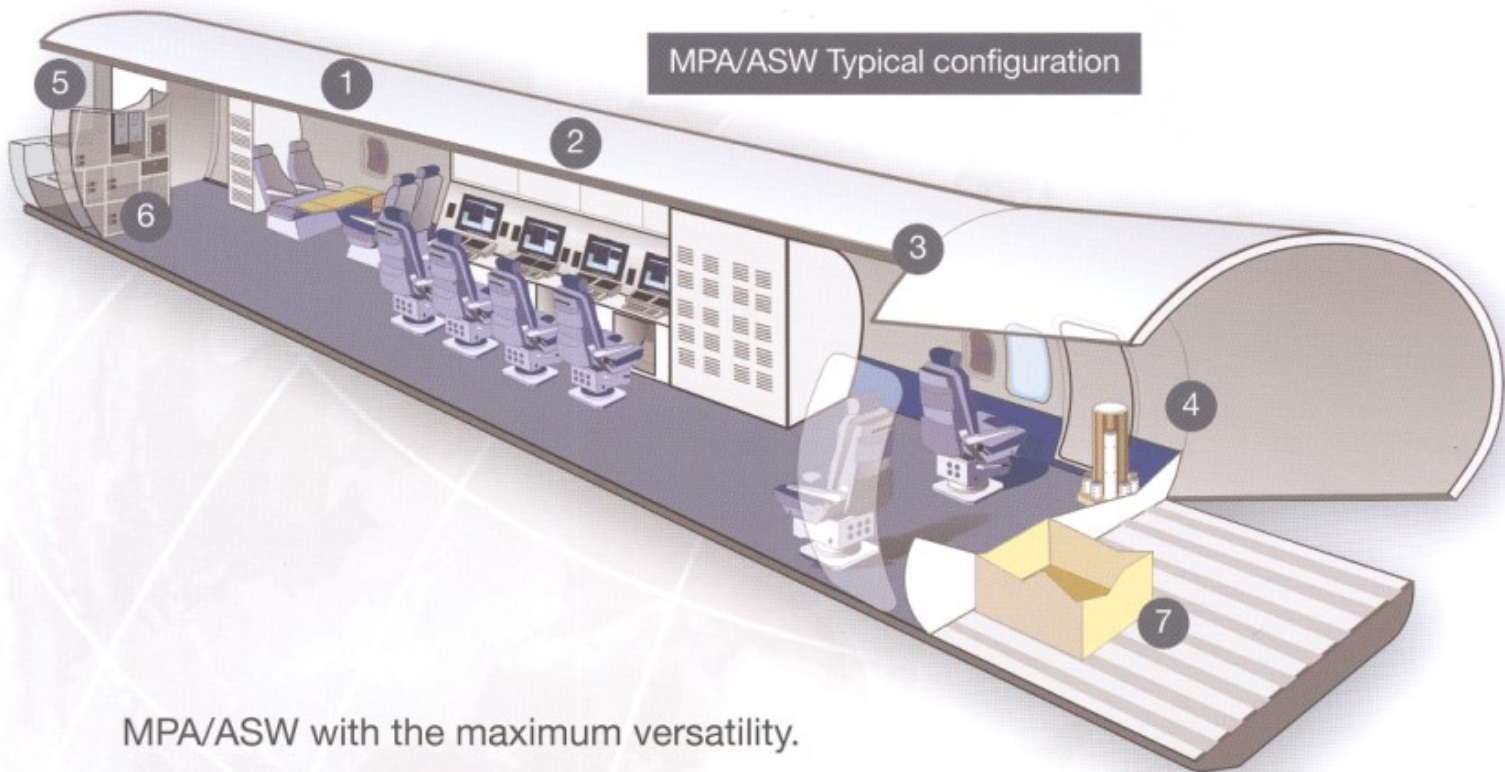
1 - Rest area

2 - Operator's console x 4  
(typical configuration)

3 -Observer's position x 2

4 - Sonobuoy  
launcher

5 - Toilet



MPA/ASW with the maximum versatility.

- Rear ramp certified to be opened in flight up to 240 knots.
- Optimum visibility: high wing configuration, and bubble windows that can be opened in flight.
- Observers' area with all the items required for the delivery of sonobuoys, flares and SAR equipment.
- In addition to the MPA/ASW missions, the C295 Persuader allows to transport standard 88" x 108" pallets, as well as bulky and heavy loads. This facilitates the response to support other units, and the transport of its own spares and Ground Support Equipment for C295 deployments.





## Multi-Role Capability



6 - Galley

7 - In flight operable ramp

295  
USA/MPA

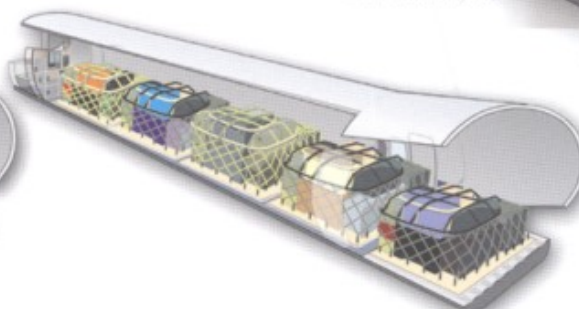
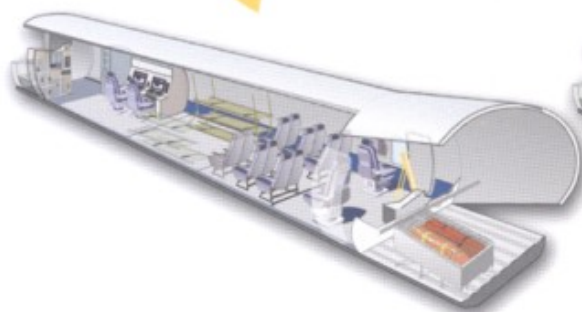
C295 Palletized Multirole MPA

Palletized FITS system, 2 operators

Palletized rest area for 4 crewmembers

Palletized observer's area, with flares launcher and flares rack

SAR launcher



### Multirole Palletized MPA: The True Multi-role aircraft

The use of palletized mission systems, such as the ones installed on board the US Coast Guard's CN235 MPA (HC-144A) and Portugal Air Force's C295 MPA, increases notably the operational flexibility of the fleet.

Thanks to its large rear cargo door (2.3m width), the C295 Palletized Multirole MPA can be quickly reconfigured, providing the maximum versatility

- Transport of bulky and/or lengthy loads, such as aircraft engines, helicopter blades, ground support equipment (GSE), wheeled loads, etc.
- 5 cargo pallets (88" x 108" each) or 3 pallets without removing the consoles. Seats and stretchers on pallets.
- 68 passengers in lateral seats, with civil toilet and galley
- Medical evacuation: from NATO stretchers up to Intensive Care Units (ICU)





# C295 MPA



- C295 Persuader, a modern military multi-role aircraft
- Designed for military Maritime Patrol operations
- Over 11 hours of endurance in ASW configuration
- In service proven ASW/ASuW mission system
- Maximum versatility

## Dimensions

Overall length (with MAD):	27.00 m	88 ft	7 in
Overall height:	8.66 m	28 ft	5 in
Wing span:	25.81 m	84 ft	8 in
Cabin height:	1.90 m	6 ft	3 in
Cabin maximum width:	2.70 m	8 ft	10 in

## Weights

Maximum Take Off Weight (MTOW)	23,200 kg	51,146 lb
Maximum Landing Weight (MLW)	23,200 kg	51,146 lb
Usable fuel	7,500 liters	1,981 USGal

## Power plant

Two turboprop Pratt & Whitney Canada PW127G, with 2,645 shp each  
Propellers Hamilton Standard 568F-5 (six blades)





## **AIRBUS** MILITARY

EADS CONSTRUCCIONES AERONAUTICAS, S.A.U. (EADS CASA)

Avenida de Aragón, 404 - 28022 Madrid, SPAIN  
Phone: +34 91 585 7362 Fax: +34 91 585 7366  
E-mail: [sales@military.airbus.com](mailto:sales@military.airbus.com) Website: [www.airbusmilitary.com](http://www.airbusmilitary.com)

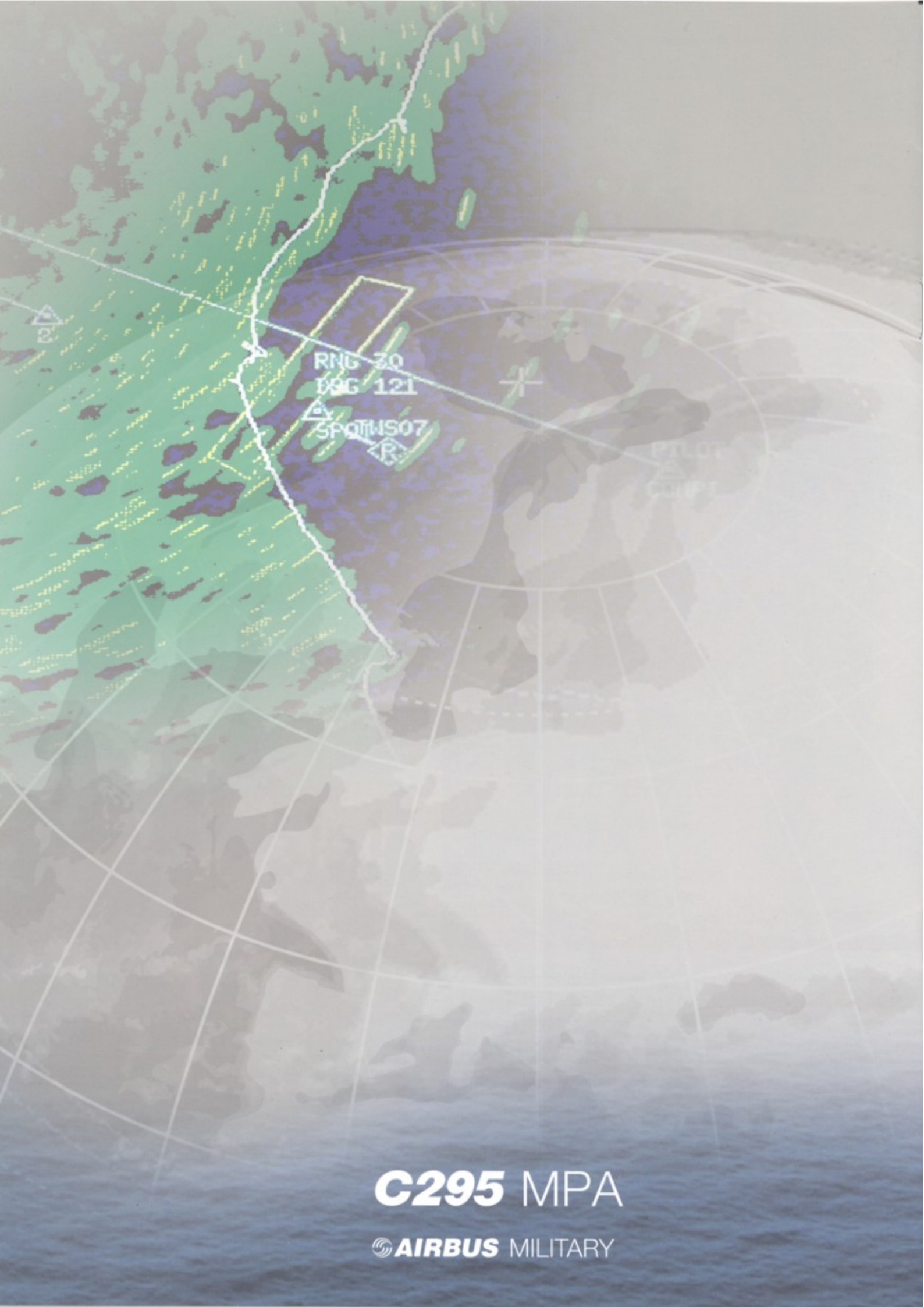
© EADS CASA 2010 ALL RIGHTS RESERVED

This document and all information contained herein is the sole property of EADS CASA. No intellectual property rights are granted by the delivery of this document or disclosure of its content. This document shall not be reproduced or disclosed to a third party without the express written consent of EADS CASA. This document and its content shall not be used for any other purpose than for which it is supplied.

The statements made herein do not constitute an offer. They are based on the assumptions shown and are expressed in good faith. Where the supporting grounds for these statements are not shown, EADS CASA will be pleased to explain the basis thereof.

AIRBUS IS AN EADS COMPANY


Reference: AMCM0087/03/2010



RNG 30  
ESG 121  
SPOTMS07

PTLOT  
COUP

# C295 MPA

 AIRBUS MILITARY